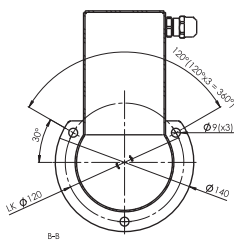
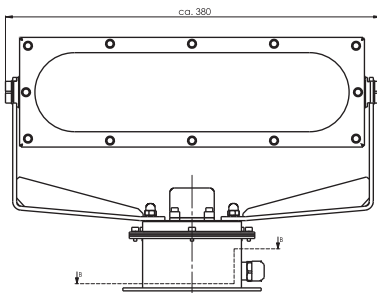
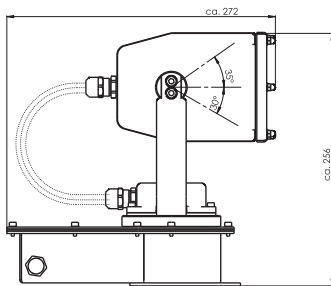




Virgo  
SS 192 LED R



### Technical Data

Name & No.	kg	Description
Virgo SS 192 LED R	7,5	<ul style="list-style-type: none"> <li>• IP 56</li> <li>• housing and crutch made of stainless steel, toughened soda-lime glass lens, parabolically lead coated mirror</li> <li>• all surfaces white powdercoated RAL 9016, internal surfaces are optical matt black</li> <li>• silikon gaskets</li> <li>• 4 white LED modules</li> <li>• input voltage: 24V DC</li> <li>• illuminated area in 100m: ø 10 m</li> <li>• luminous flux: approx. 900 lm</li> <li>• peak beam candle power: approx. <math>2,6 \times 10^5</math> cd</li> <li>• beam angle: 5°, also available with 3° or 8°</li> <li>• light intensity in 100m: approx. 14 lx</li> <li>• pan: continue rotating</li> <li>• duability diode: 50.000 hours in continuous operation (manufacturer's data)</li> <li>• certification: German Lloyd</li> </ul>

### Optical Performance

Electric Voltage	Electric Power	Peak Beam Candle Power	Range M 1 Lux	Beam Angle
24V DC	15W	$2,6 \times 10^5$ cd	410 m	5°

### Variations

Mounting Variations	Name	Description
Remote Control	R	• searchlight mounted on electric remote control unit complete with joystick, control panel for flush console installation

### Spare Parts on request

