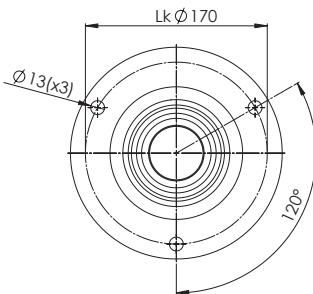
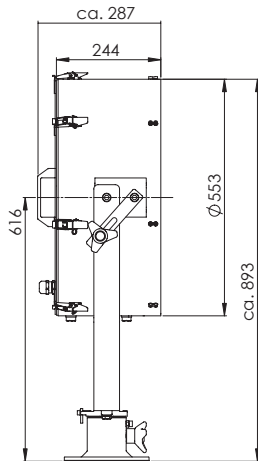




Virgo  
SS 450 LED D



### Technical Data

Name & No.	kg	Tilt	Description
Virgo SS 450 LED D	40,50	-40°/+30°	<ul style="list-style-type: none"> <li>• IP 56</li> <li>• housing, back plate and crutch made of stainless steel, base made of RG5, toughened soda-lime glass lens, parabolically lead coated mirror</li> <li>• all surfaces white powdercoated RAL 9016, internal surfaces are optical matt black</li> </ul>
Virgo SS 450 LED DP	53,00	-40°/+30°	
Virgo SS 450 LED C	45,50	-30°/+20°	<ul style="list-style-type: none"> <li>• silikon gaskets</li> <li>• 31 white LED modules</li> <li>• input voltage: 85-264V AC, 120-370V DC or 24V DC</li> <li>• illuminated area in 100m: ø 5 x 5m</li> </ul>
Virgo SS 450 LED CP	58,00	-30°/+20°	
Virgo SS 450 LED R	89,50	-30°/+20°	<ul style="list-style-type: none"> <li>• luminous flux: approx. 11.100 lm</li> <li>• peak beam candle power: approx. 5,0 x 10<sup>5</sup> cd</li> <li>• beam angle: 3°, also available with 5° or 8°</li> </ul>
Virgo SS 450 LED RC	122,50	-30°/+20°	

### Optical Performance

Electric Voltage	Electric Power	Peak Beam Candle Power	Range M 1 Lux	Beam Angle
24V DC	130W	5,0 x 10 <sup>6</sup> cd	2.000 m	3°
220-230V AC	130W	5,0 x 10 <sup>6</sup> cd	2.000 m	3°
110-120V AC	130W	5,0 x 10 <sup>6</sup> cd	2.000 m	3°

### Variations

Mounting Variations	Name	Description
Deck	D	• manual operation of searchlight
Cabin	C	• manual operation from below by control mechanism
Remote Control	R	• searchlight mounted on electric remote control unit complete with joystick, control panel for flush console installation
Pedestal	P	• searchlight on pedestal 1m high, special heights on request

### Spare Parts on request