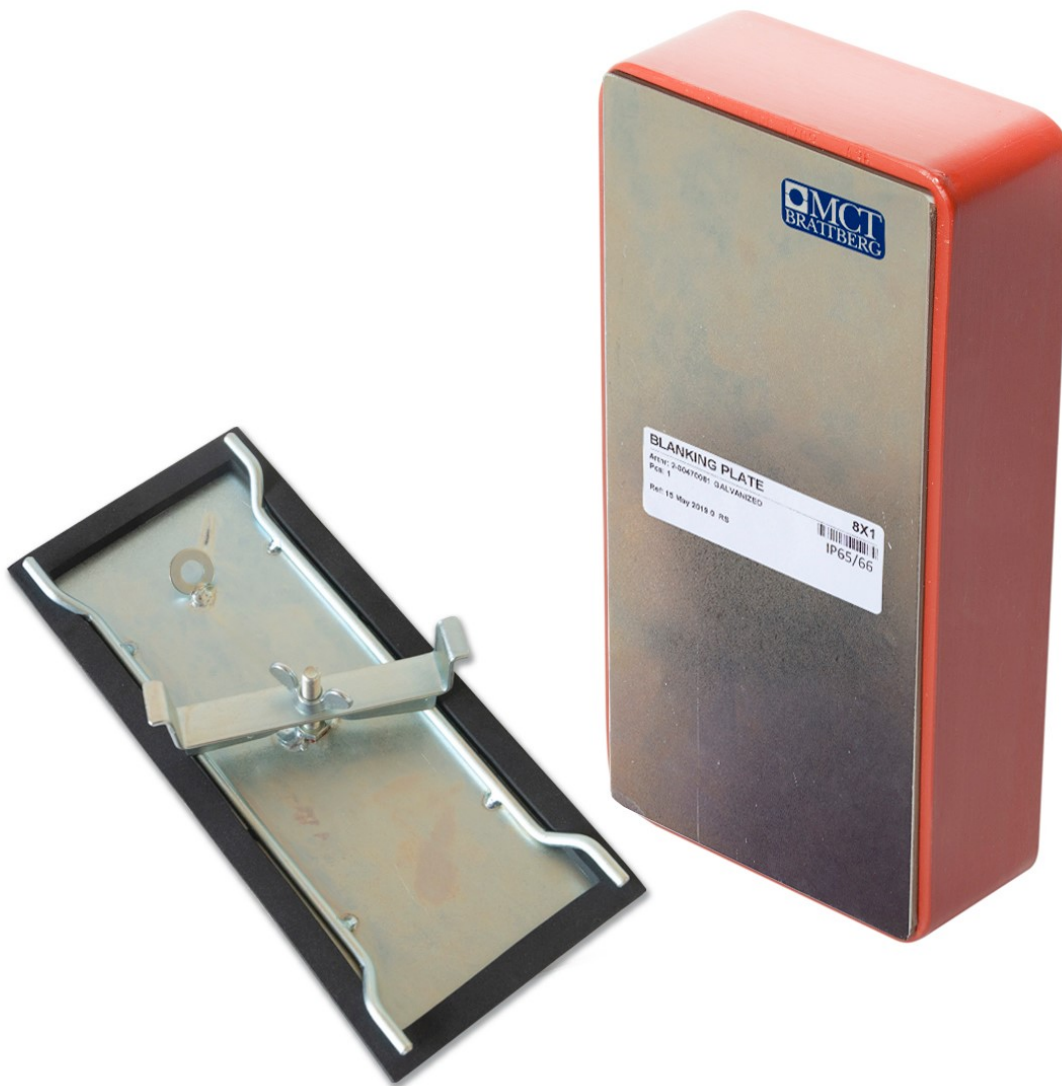


# MCT Brattberg Blanking Plate

## Data Sheet



Seals frame prior to block installation.

*Putting safety first*

<b>Data.</b>	
Trade name:	MCT Brattberg Blanking Plate
Variations	2x1, 4x1, 6x1, 8x1
Material:	Galvanized steel or stainless steel 316L
Ingress Protection	IP65 / IP66
Working temperature:	-60 to +90 Degrees Celsius
Surface Treatment	No surface treatment
Gasket material	Cellular Rubber Foam EPDM 145kg/m <sup>3</sup>
<b>Chemical compatibility.</b>	
Water:	Excellent
Oil:	Excellent
Ozone:	Not recommended
Sea water:	Excellent
Methanol:	Good
Chlorine:	Not recommended
Diesel:	Good
Gasoline:	Good
Acid:	Not recommended

<b>Data Gasket.</b>			
<b>Description</b>	<b>Standard</b>	<b>Value</b>	<b>Unit</b>
ASTM D1056-14 Classification	2A2 B3 C M		
Density	ASTM D3575	125-165	Kg/m <sup>3</sup>
Compression Deflection (25%)	ASTM D1056	35-60	kPa
Compression Deflection (50%)	ASTM D1056	60-90	kPa
Compression Set (25%/22h/23°C) – After 24hrs	ASTM D1056	3-5	%
Compression Set (50%/22h/23°C) – After 24hrs	ASTM D1056	15-35	%
Shrinkage (22h/70°C)	ASTM D573	4-8	%
Shore Hardness	40-50	00	
Elongation (Minimum)	ASTM D412	180-220	%
Temperature Range (Constant)	-30 / +90	°C	
Temperature Range (Intermittent)	+90 / 120	°C	
Water Absorption (Max Weight Change)	ASTM D1056	1-2	%
Flame Resistance (>3mm)	FMVSS302	Pass	
Tensile Strength	ASTM D412	500-600	kPa
Ozone test (200+/-5) ppm (40+/-2°C) 20% elongation, 72h	ASTM D1171-99	No Cracks	
Environmental Protection	CFC, HALOGEN & HCFC FREE		
Certification	conforms	Reach & RoHS	

Putting safety first



OF20190824