



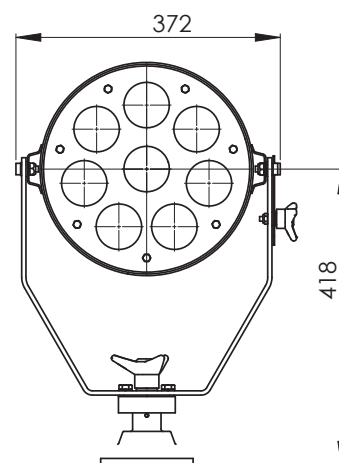
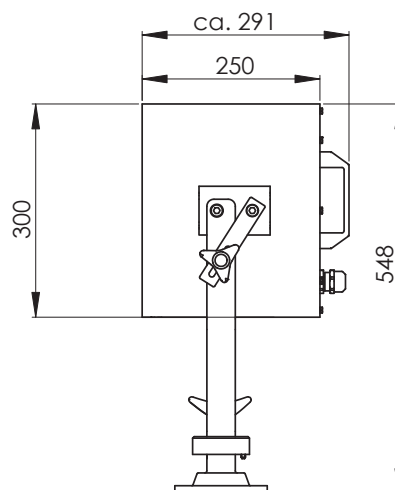
NEW SERIES
Lightweight and cost-effectively version
due to alu housing



Scorpius
SS 250 LED D

Technical Data

Name & No.	kg	Description
Scorpius SS 250 LED D	13,60	<ul style="list-style-type: none"> • IP 56 • housing out of seawaterresistant aluminium, bracket out of stainless steel, collimator out of glass, base made of RG5 red brass
Scorpius SS 250 LED DP	21,10	<ul style="list-style-type: none"> • all surfaces white powdercoated RAL 9016, internal surfaces are optical matt black
Scorpius SS 250 LED C	18,60	<ul style="list-style-type: none"> • 8 LED modules • input voltage: 230 V (120-230V) 50/60Hz
Scorpius SS 250 LED CP	26,10	<ul style="list-style-type: none"> • illuminated area in 100m: Ø approx. 14 m • luminous flux: approx. 10.400 lm
Scorpius SS 250 LED R	32,60	<ul style="list-style-type: none"> • peak beam candle power: approx. $6,3 \times 10^5$ cd • beam angle: 8° (also available with 3° or 5°) • light intensity in 100m: approx. 55 lx
Scorpius SS 250 LED RP	40,10	<ul style="list-style-type: none"> • range: 1 lx in approx. 670 m • pan: 370° • duability diode: 30.000 hours in continuous operation (manufacturer's data) • certification: DNV, German Lloyd • modulare LED design combine the outgoing beam telecentric • resistant glass optics with an efficiency of 89% • low weight due to the aluminium housing • international recognized standard



Variations

Mounting Variations	Name	Description
Deck	D	• manual operation of searchlight
Cabin	C	• manual operation from below by control mechanism
Remote Control	R	• searchlight mounted on electric remote control unit complete with joystick, control panel for flush console installation
Pedestal	P	• searchlight on pedestal 1m high, special heights on request

Spare Parts on request

Alterations and technical developments reserved.

