



Tucana 2 LED



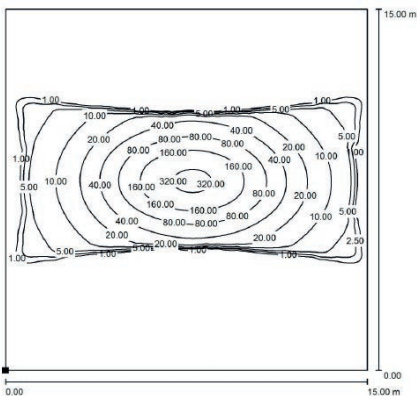
Tucana 4 LED



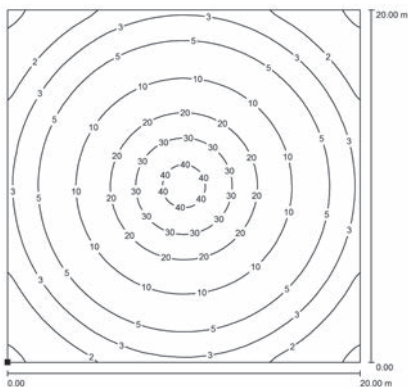
Tucana 6 LED

Technical Data

Name & Nr.	Watt	kg	Beschreibung
			<ul style="list-style-type: none"> • IP 67 • holding frame, connection box and bracket made of stainless steel • output power: approx. 1.000 lm / LED module <p>Each floodlight can be individually assembled with LED modules 45°x20° and 120°x120°: 45° x 20° for spot lighting 120° x 120° for area lighting On request, we can adjust the floodlight to your needs and also offer other combinations and sizes.</p>
Tucana 2 LED	18W	1,50	<ul style="list-style-type: none"> • 2 x High Power LED modules • input voltage: 24V DC • luminous flux: approx. 1.900 lm • illumination level in 10m: approx. 2lx • illumination level in 15m: approx. 1lx • illumination area in 10m: ø 34,6m • illumination area in 15m: ø 52m • Luminaire efficiency: 108 lumen / watt
Tucana 4 LED	36W	2,00	<ul style="list-style-type: none"> • 4 x High Power LED modules • input voltage: 24V DC • luminous flux: approx. 3797 lm • illumination level in 10m: approx. 4lx • illumination level in 15m: approx. 2lx • illumination area in 10m: ø 34,6m • illumination area in 15m: ø 52m • Luminaire efficiency: 106 lumen / watt
Tucana 6 LED 45°x20°	60W	2,50	<ul style="list-style-type: none"> • 6 x High Power LED modules • input voltage: 230V AC or 24V DC • luminous flux: approx. 5.678 lm • light intensity in 10 m: approx. 105 lx • light intensity in 30 m: approx. 12 lx • illuminated area in 10 m: approx. 9 m x 5 m • illuminated area in 30 m: approx. 25 m x 11 m • optical light output ratio: 94 lumen / watt
Tucana 6 LED 120°x120°	60W	2,50	<ul style="list-style-type: none"> • 6 x High Power LED modules • input voltage: 230V AC or 24V DC • luminous flux: approx. 5.678 lm • light intensity in 10 m: approx. 6 lx • light intensity in 30 m: approx. 12 lx • illuminated area in 10 m: ø 34,6 m • illuminated area in 30 m: ø 104 m • optical light output ratio: 94 lumen / watt



Tucana 6 LED 45° x 20°, measuring distance: 10m



Tucana 6 LED 120° x 120°, measuring distance: 10m

Spare Parts on request

ENERGY
management



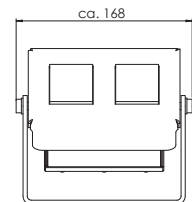
Tucana 20 LED



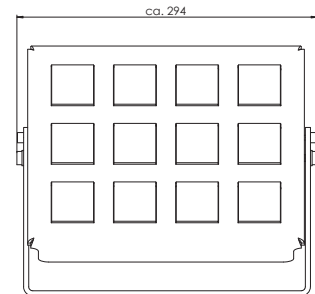
Tucana 30 LED

Technical Data

Name & Nr.	Watt	kg	Beschreibung
Tucana 12 LED	102W	6,90	<ul style="list-style-type: none"> • 12 x High Power LED modules • input voltage: 230V AC • luminous flux: approx. 11.370 lm • light intensity in 10 m: approx. 12 lx • light intensity in 45 m: approx. 1 lx • illuminated area in 10 m: ø 34,6 m • illuminated area in 30 m: ø 156 m • optical light output ratio: 111 lumen / watt
Tucana 20 LED	167W	11,50	<ul style="list-style-type: none"> • 20 x High Power LED modules • input voltage: 230V AC • luminous flux: approx. 18.950 lm • light intensity in 10 m: approx. 20 lx • light intensity in 62 m: approx. 1 lx • illuminated area in 10 m: ø 34,6 m • illuminated area in 62 m: ø 225 m • optical light output ratio: 113 lumen / watt
Tucana 30 LED	256W	14,50	<ul style="list-style-type: none"> • 30 x High Power LED modules • input voltage: 230V AC • luminous flux: approx. 28.424 lm • light intensity in 10 m: approx. 30 lx • light intensity in 75 m: approx. 1 lx • illuminated area in 10 m: ø 34,6 m • illuminated area in 75 m: ø 260 m • optical light output ratio: 111 lumen / watt

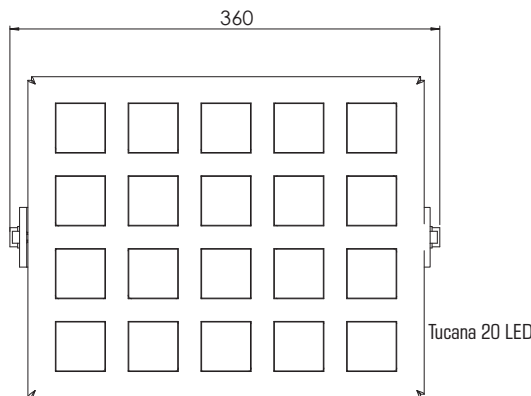


Tucana 2 LED

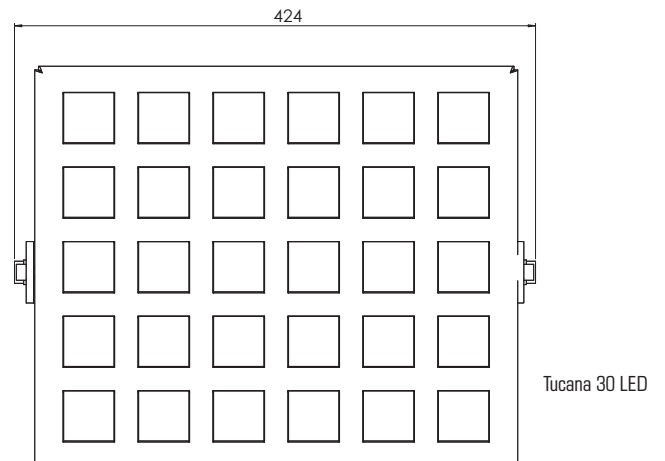


Tucana 12 LED

Spare Parts on request



Tucana 20 LED



Tucana 30 LED