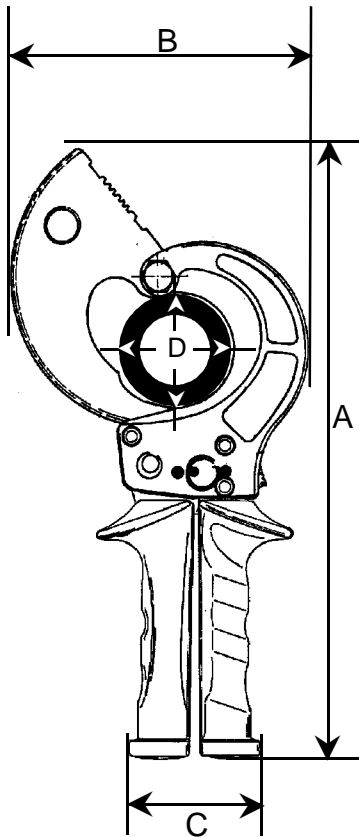


'KS-34'

300 sqmm / 35 mmØ

CABLE CUTTER



MAIN DATA

Measures (apprx.):

Length A: 250 mm
 Width B: 110 mm
 CableØ D: 35 mm
 Weight: 0.9 kg

Grips:

Polypropylen (PP), sev.
 cadmium-free colors

Surfaces:

mainly blackened

Other material:

all moving parts made from
 high grade steels, specially heat
 treated.Fo

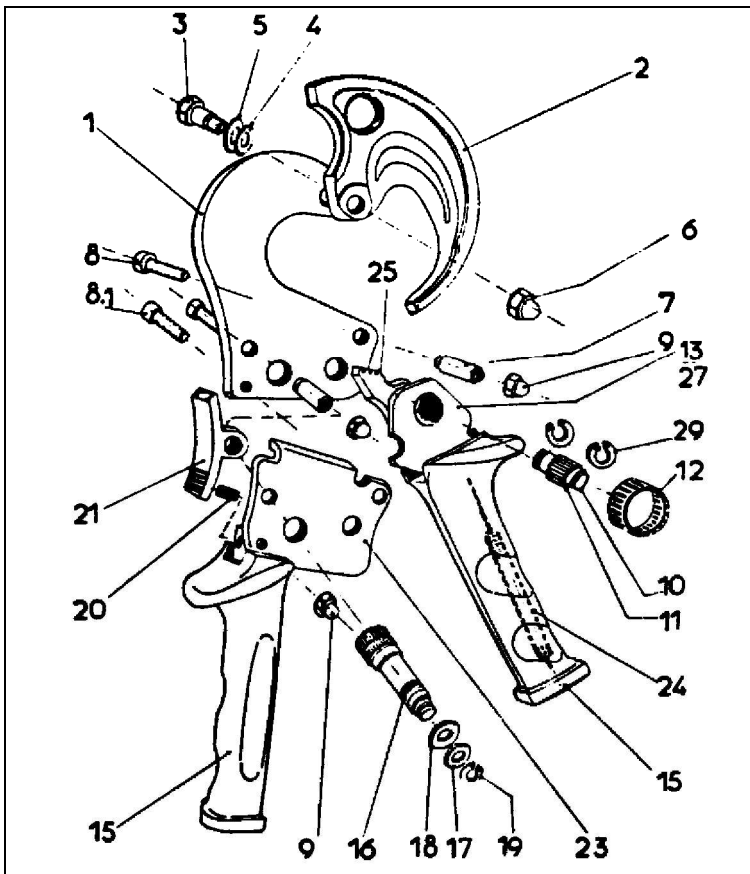
SPAREPARTS

The parts shown in the exploded drawing and the list are easily changeable if the guides in our leaflet 'Info KS-34' are being observed. This will be mailed at your request.

Further our Service will be happy to help you in case of repairs or sparepart needs.

BEKU-APPARATEBAU
 Quitzowstraße 24-26
 10559 Berlin

Tel: +49-30-396 06 90
 Fax: +49-30-396 50 97



Part No.	each per cutter	Description	Order No.
1	1	Fixed Blade	34.001
2	1	Moveable Blade	34.002
3	1	Pinscrew	34.003
4	1	Platespring	34.004
5	1	Adjustment Washer	34.005
6	1	Headed Nut	34.006
7	2	Distance Case	34.007
8	3	Assembling Screw	34.008
9	3	Headed Nut	34.009
10	1	Bolt	34.010
11	19	Bearing Needles	34.011
12	1	Meedle Bearing	34.012
13	1	Moveable Handle	34.013
15	2	Grip	34.015
16	1	Locking Axle	34.016
17	1	Washer	34.017
18	1	Plarespring	34.018
19	1	Circlip	34.019
20	1	Spring	34.020
21	1	Holding Ratchet	34.021
23	1	Cover Plate, complete w/ Handle Tube	34.023
24	1	Tension Spring, complete w/ Wire Bow	34.024
25	1	Ratchet	34.025
29	2	Circlip for Part 10	34.029