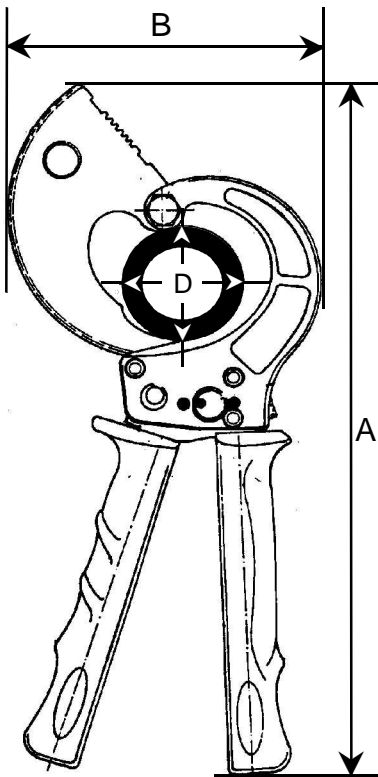


# 'KS-52'

500 sqmm / 52 mmØ

# CABLE CUTTER



## MAIN DATA

Measures (appr.):

Length A: 325 mm  
Width B: 145 mm

CableØ D: 52 mm

Weight: 1.2 kg

Gripps:

Polypropylen (PP), sev.  
cadmium-free colors

Surfaces:

mainly blackened

Other material:

all moving parts made from  
high grade steels, specially heat  
treated.

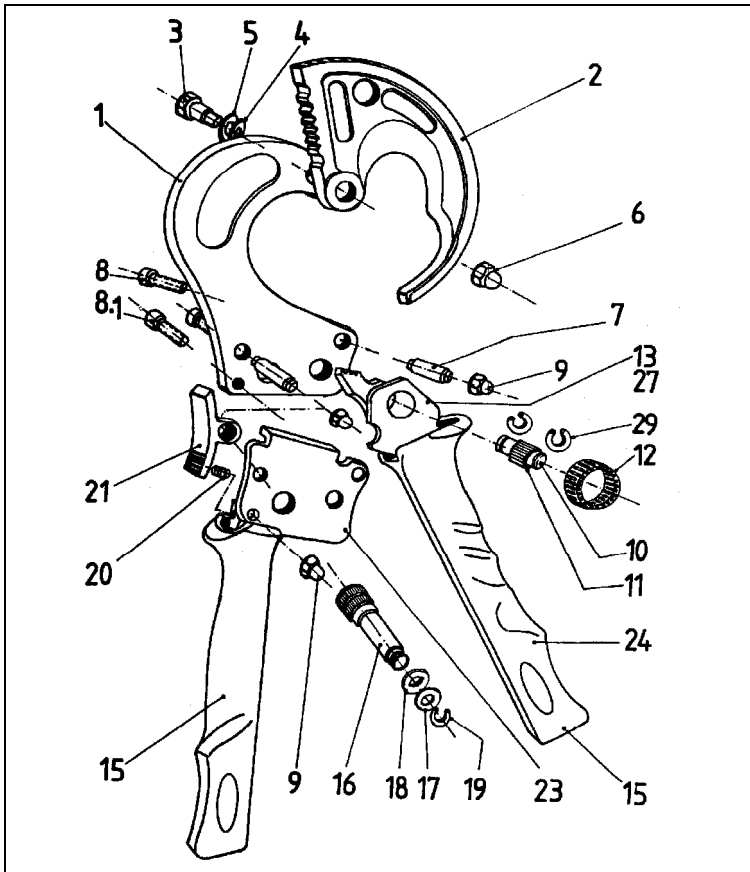
## SPAREPARTS

The parts shown in the exploded drawing and the list are easily changeable if the guides in our leaflet 'Info KS-52' are being observed. This will be mailed at your request.

Further our Service will be happy to help you in case of repairs or sparepart needs.

**BEKU-APPARATEBAU**  
Quitzwstraße 24-26  
10559 Berlin

Tel: +49-30-396 06 90  
Fax: +49-30-396 50 97



Part No.	each per cutter	Description	Order No.
1	1	Fixed Blade	52.001
2	1	Moveable Blade	52.002
3	1	Pinscrew	52.003
4	1	Platespring	52.004
5	1	Adjustment Washer	52.005
6	1	Headed Nut	52.006
7	2	Distance Case	52.007
8	3	Assembling Screw	52.008
9	3	Headed Nut	52.009
10	1	Bolt	52.010
11	19	Bearing Needles	52.011
12	1	Meedle Bearing	52.012
13	1	Moveable Handle	52.013
14	1	Grip, fixed handle	52.014
15	1	Grip, moveable handle	52.015
16	1	Locking Axle	52.016
17	1	Washer	52.017
18	1	Platespring	52.018
19	1	Circlip	52.019
20	1	Spring	52.020
21	1	Holding Ratchet	52.021
23	1	Cover Plate, complete w/ Handle Tube	52.023
24	1	Tension Spring, complete w/ Wire Bow	52.024
25	1	Ratchet	52.025
29	2	Circlip for Part 10	52.029