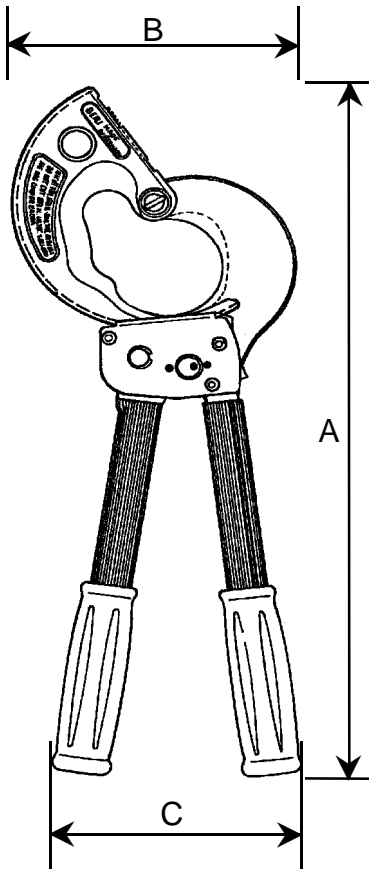


'KS-62HD'

840 sqmm / 62 mmØ

CABLE CUTTER



MAIN DATA

Measures (apprx.):

Length A: 410 mm
 Width B: 160 mm
 Width C: 130 mm
 CableØ D: 62 mm

Weight: 2.2 kg

Grips:

Polypropylen (PP), black

Tube cover:

PVC-tube, different colors
 (cadmiu-free)

Surfaces:

mainly blackened

Other material:

all moving parts made from
 high grade steels, specially heat
 treated.

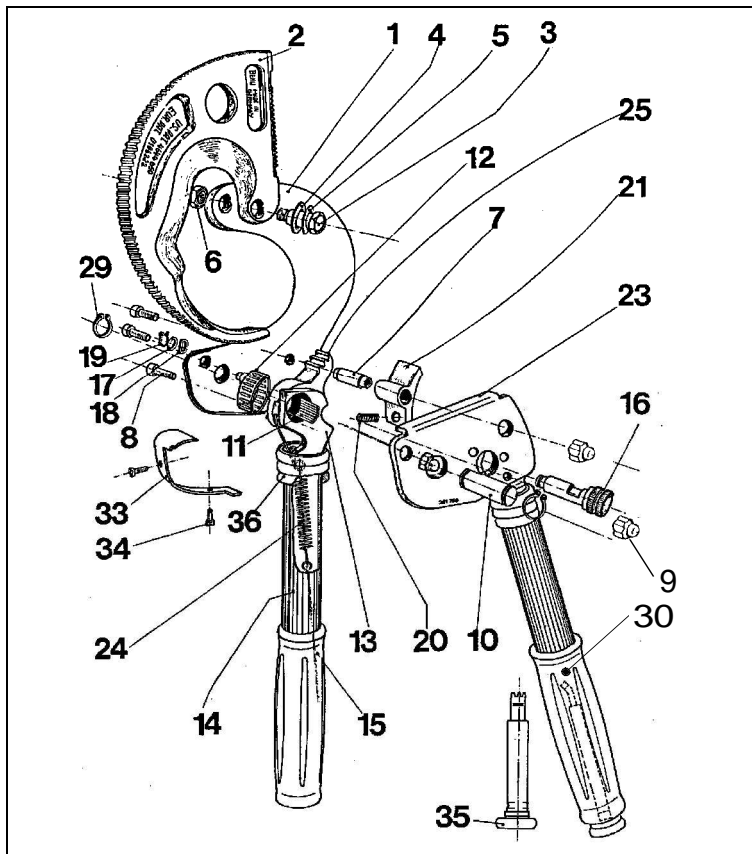
SPAREPARTS

The parts shown in the exploded drawing and the list are easily changeable if the guides in our leaflet 'Info KS-62HD' are being observed. This will be mailed at your request.

Further our Service will be happy to help you in case of repairs or sparepart needs.

BEKU-APPARATEBAU
 Quitzowstraße 24-26
 10559 Berlin

Tel: +49-30-396 06 90
 Fax: +49-30-396 50 97



Part No.	ea. per cutter	Description	Order No.
1	1	Fixed Blade	162.101
2	1	Moveable Blade	162.102
3	1	Pinscrew	162.103
4	1	Plate Spring	162.104
5	1	Adjustment Washer	162.105
6	1	Headed Nut	162.106
7	2	Distance Case	162.107
8	3	Assembling Screw	162.108
9	3	Headed Nut for P/N 8	162.109
10	1	Bolt	162.110
11	21	Bearing Needles	162.111
12	1	Needle Bearing	162.112
13	1	Moveable Handle	162.113
14	1	PVC-Tube	162.114
15	1	Grip	162.115
16	1	Locking Axle	162.116
17	1	Washer	162.117
18	1	Spring Washer	162.118
19	1	Circlip	162.119
20	1	Spring	162.120
21	1	Holding Ratchet	162.121
23	1	Cover Palte, c/w Tube	162.123
24	1	Tension Spring, c/w wire bow	162.124
25	1	Ratchet	162.125
29	2	Circlip for P/N 10	162.129
30	1	Grip with tooth comb holder	162.130
33	1	Cover Plate	162.133
34	2	Holding Screw for P/N 33	162.134
35	1	tooth Comb	162.135
36	2	Rubber Ring	162.136