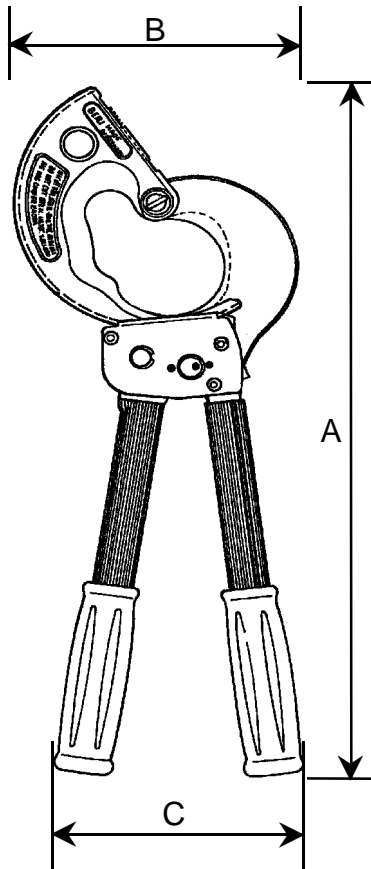


# 'KS-80'

1000 sqmm / 80 mmØ

## CABLE CUTTER



### MAIN DATA

Measures (apprx.):

Length A: 610 mm  
 Width B: 190 mm  
 Width C: 150 mm  
 CableØ D: 80 mm

Weight: 3.0 kg

Grips:

Polypropylen (PP), black

Tube cover:

PVC-tube, different colors (cadmiu-free)

Surfaces:

mainly blackened

Other material:

all moving parts made from high grade steels, specially heat treated.

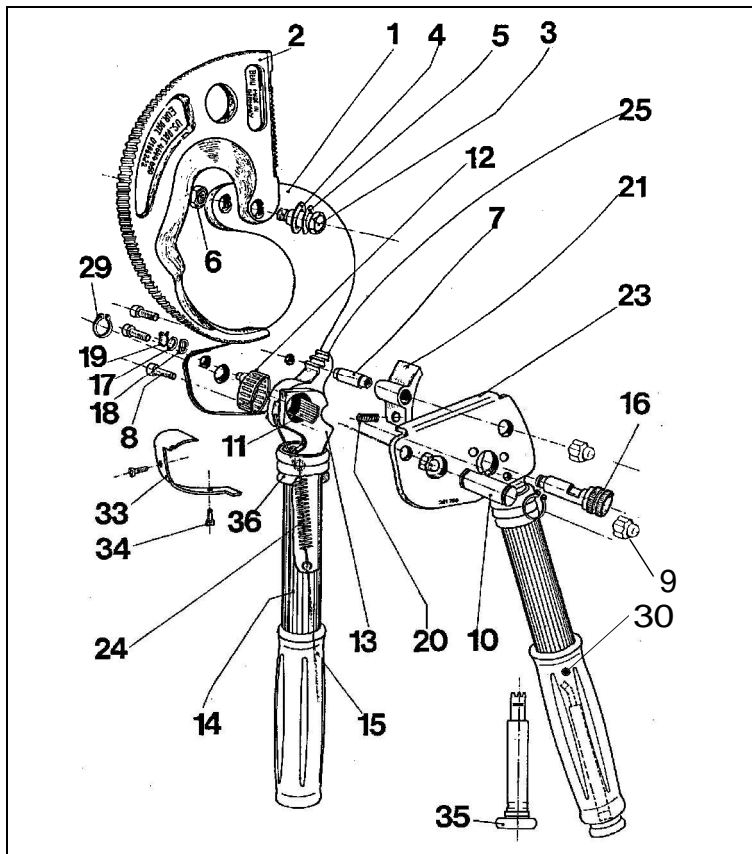
### SPAREPARTS

The parts shown in the exploded drawing and the list are easily changeable if the guides in our leaflet 'Info KS-80' are being observed. This will be mailed at your request.

Further our Service will be happy to help you in case of repairs or sparepart needs.

**BEKU-APPARATEBAU**  
 Quitzowstraße 24-26  
 10559 Berlin

Tel: +49-30-396 06 90  
 Fax: +49-30-396 50 97



Part No.	ea. per cutter	Description	Order No.
1	1	Fixed Blade	80.101
2	1	Moveable Blade	80.102
3	1	Pinscrew	80.103
4	1	Plate Spring	80.104
5	1	Adjustment Washer	80.105
6	1	Headed Nut	80.106
7	2	Distance Case	80.107
8	3	Assembling Screw	80.108
9	3	Headed Nut for P/N 8	80.109
10	1	Bolt	80.110
11	21	Bearing Needles	80.111
12	1	Needle Bearing	80.112
13	1	Moveable Handle	80.113
14	1	PVC-Tube	80.114
15	1	Grip	80.115
16	1	Locking Axle	80.116
17	1	Washer	80.117
18	1	Spring Washer	80.118
19	1	Circlip	80.119
20	1	Spring	80.120
21	1	Holding Ratchet	80.121
23	1	Cover Palte, c/w Tube	80.123
24	1	Tension Spring, c/w wire bow	80.124
25	1	Ratchet	80.125
29	2	Circlip for P/N 10	80.129
30	1	Grip with tooth comb holder	80.130
33	1	Cover Plate	80.133
34	2	Holding Screw for P/N 33	80.134
35	1	tooth Comb	80.135
36	2	Rubber Ring	80.136