

*Hey. Over here.
Watch out for me!
I'm Platform EC134
at Lat 29N Long 93W.*

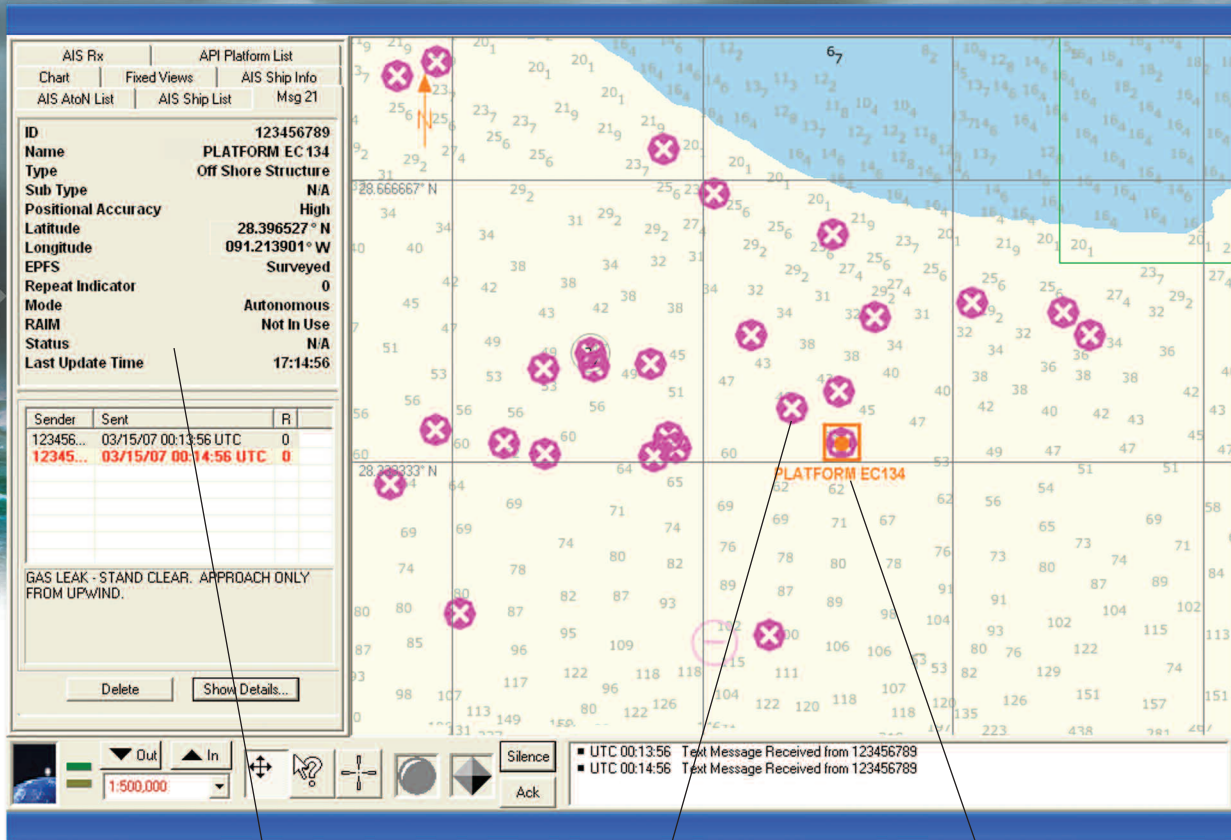


ATONIS

AIS Transponder

Identify your
offshore structure with
navigational information
to protect
life and property.

Pharos Marine 
Automatic Power



On their ATONIS screens, ships receive Message 21, showing complete information about your structure.

ATONIS shows vessels their position relative to your structure.

ATONIS pinpoints your structure's location on navigation charts—even if the charts are not up to date.

ATONIS provides ships with data that can make a difference in critical navigation decisions.



Automatic Power introduces ATONIS for offshore structure safety.

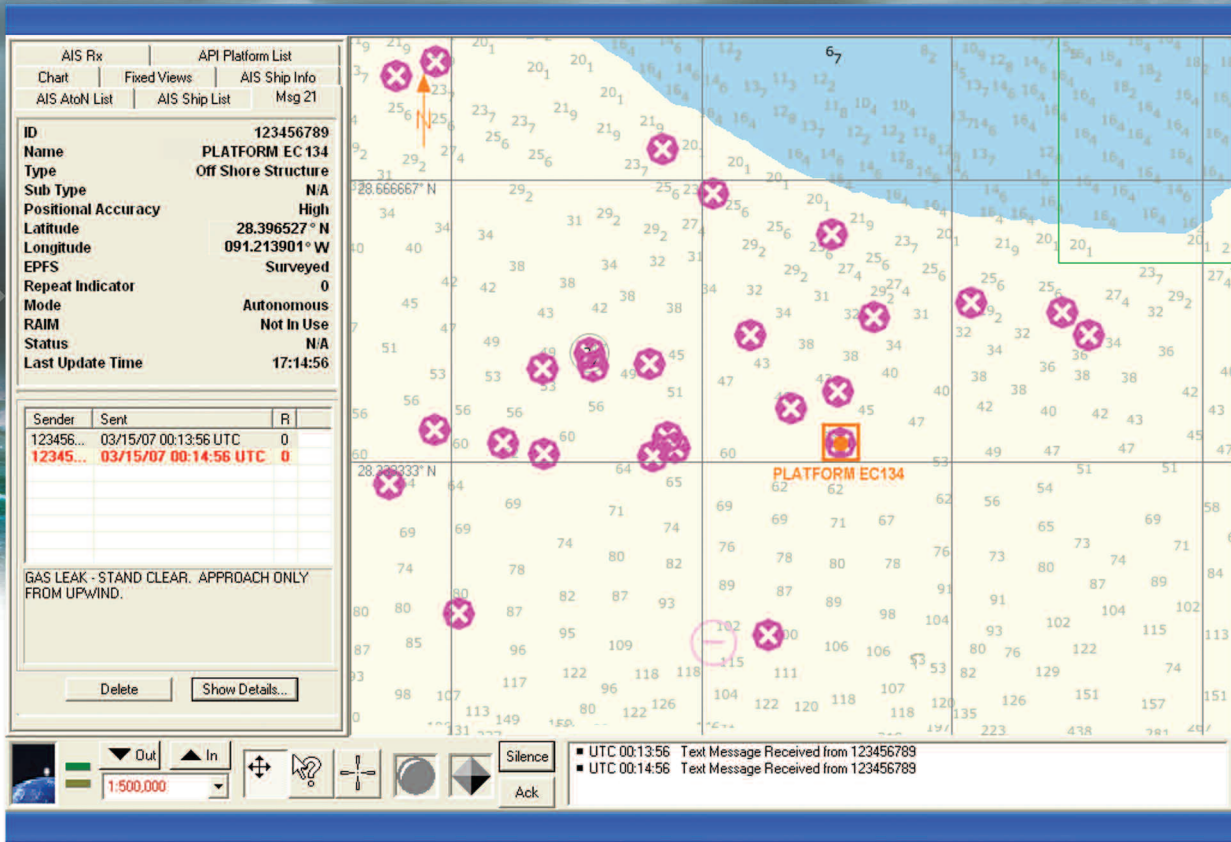
Specifically designed for use on marine structures, ATONIS is a very low-power transponder (< 1 amp-hr/day) that can operate for days on minimal battery back-up and keeps your offshore structure visible to vessels that are networked through AIS transponders to help avoid collisions. AIS (Automatic Identification System) is already being used for navigation on all vessels over 300 tons and many OSVs, so your ATONIS becomes an integral part of the navigation system used by ships today. Your structure's navigation information is automatically displayed on the ship's AIS screen in the wheelhouse.



What is the Automatic Identification System?

AIS is a system of transponders installed on ships as well as on Aids-to-Navigation such as buoys and markers—any offshore structure that could pose an obstacle to navigation. Ships equipped with transponders autonomously pass navigational information to each other using a common data format. The system is self-organizing and requires no operator intervention.

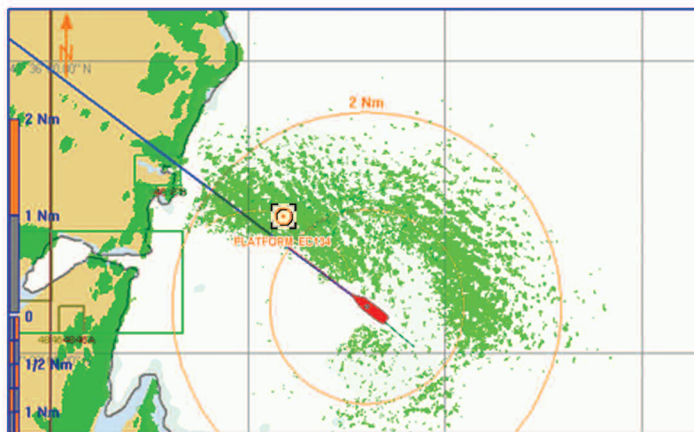
Class A AIS transponders are required for all SOLAS class vessels and vessels over 300 gross tons on international voyages. In addition, the U.S. Coast Guard requires all commercial vessels over 65 feet in length, towing vessels more than 26 feet in length and 600 horsepower on international voyages, or any vessel



ATONIS information protects other offshore structures such as rigs, buoys and wind farms.



Ships use AIS overlay on radar screens for more precise location of offshore structures, allowing visibility in adverse weather conditions such as dense fog or high waves.





operating in U.S. navigable waters, to carry and operate AIS transponders. IALA (International Association of Lighthouse Authorities) recommends the use of AIS transponders on offshore structures. AIS is an emerging standard that is becoming an international requirement. Automatic Power's ATONIS transponder uses the AIS system to send ID data for your offshore structure.

ATONIS tells ships all about your structure.

Your ATONIS will automatically alert AIS-equipped vessels of your structure's identity by name and location (latitude and longitude), as well as reporting any alarm conditions such as leak warnings or failure warnings (fires or other crises). It can warn vessels away from an exclusion area surrounding your structure. And unlike radar, ATONIS enables ships to see your structure even in dense fogs or high seas. It retrofits easily in AtoN equipment you already have in place. And with a very low power consumption of < 1 amp-hr/day, it can operate for days with minimal battery back-up. Designed by API in conjunction with True Heading, ATONIS is a product of the experience of two AIS industry leaders, so it interfaces seamlessly with the AIS system.

From a company with credentials that count.

API/Pharos Marine is a company with an impressive reputation in the signalling business. API originated in 1947, providing aids to navigation for the first oil rigs off the coast of Texas. In 1989, API merged with Pharos Marine, which began making aids to navigation more than 100 years ago. Today, Automatic Power/Pharos Marine is a division of ProNav and has strategic locations throughout the U.S. and overseas, as well as a worldwide network of agents and distributors.

Use the international AIS system to your advantage.

With ATONIS in place, you'll have the most advanced safety interface for your structure and personnel—and you'll find it very affordable to install and operate.

To learn more about ATONIS and its benefits for your offshore structures, visit automaticpower.com or call 713-228-5208.

ATONIS Features

Low Power

Designed to be incorporated into the emergency battery-powered Aids-to-Navigation system for offshore structures.

Easily powered by solar energy.

Hardware Flexibility

Communication ports permit user to connect to variety of sensors without upgrading to new hardware.

Message Flexibility

ATONIS can automatically transmit the position of your MODU or floating production unit under any conditions or a Safety Text message to ships if emergent condition arises.

Facility Identification by Name

Identifies your structure by name to all of your offshore supply vessels under any weather conditions.



USA

Automatic Power, Inc.

P.O. Box 230738
213 Hutcheson Street (77003)
Houston, Texas 77223-0738
+1-713-228-5208 PHONE
+1-713-228-3717 FAX
www.automaticpower.com WEB
sales@automaticpower.com EMAIL

Automatic Power, Inc.

P.O. Box 414
1340 Westbank Expressway (70094)
Westwego, Louisiana 70096
+1-504-347-2384 PHONE
+1-504-348-2306 FAX
dcummiskey@automaticpower.com EMAIL

UNITED KINGDOM

AB Pharos Marine Ltd.

Steyning Way, Hounslow
Middlesex, TW4 6DL
England
+44-20-8538-1100 PHONE
+44-20-8577-4170 FAX
sales@pharosmarine.com EMAIL

SINGAPORE

AB Pharos Marine Pte. Ltd.

35 Tannery Road
#05-05 Tannery Block
Ruby Industrial Complex
Singapore 347740
+65 6747-9325 PHONE
+65 6746-0478 FAX
abpharos@singnet.com.sg EMAIL