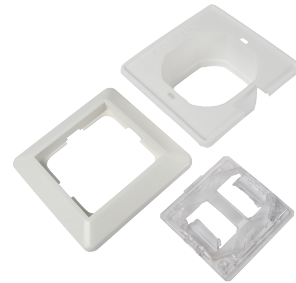




Data Sheet 1410724

Product: RS16 IP44 sett 1hull PH
EI-number: 1410724
Mat.no: EKO04066
EAN: 7020160406613
Packing: 5
Color: Polarwhite



Product description: IP44 set for RS16 flush mounted switches, except the 1+1+1 switch.

Technical specifications: Halogenfree
RS16 IP44 set for 1 switch

Size

Wiring diagram

ELKO AS

E-mail: elko@elko.no
Internet: www.elko.no
Bank: 6219.05.15880
Org.no.: NO 911 382 563 MVA

ELKO Front office
Sandstuveien 68, NO-0680 Oslo
P.O.Box 6598 Etterstad, NO-0607 Oslo
Tel.: +47 67 80 73 00
Fax: +47 67 80 73 01

ELKO Plant
Sporvind Industriområde, NO-3340 Åmot
Tel.: +47 32 78 91 00
Fax: +47 32 78 91 01