

DATASHEET

CSW Fault Monitoring Unit

For Obelux DC Operated LED Aviation Obstruction Lights

OBELUX
AVIATION LIGHTS

Obelux Oy, Kutomotie 6 B, 00380 Helsinki FINLAND | The information in this document is subject to change without notice. © Obelux Oy 2016

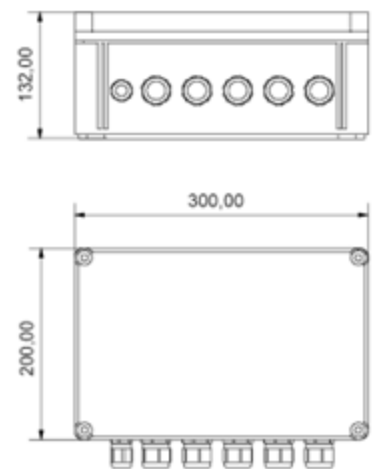
WWW.OBELUX.COM

Mechanical characteristics

- ▶ Shock-resistant polycarbonate enclosure (IP65)
- ▶ Enclosure dimensions (WxHxD): 300 mm x 200 mm x 132 mm
- ▶ Weight 1.9 kg
- ▶ Cable glands: 5 x M25 (9-17 mm cable diameter) and 2 x M16 (4.5-10 mm cable diameter)

Electrical characteristics

- ▶ Wide operating voltage range 10-60VDC
- ▶ User selectable operating parameters
- ▶ User selectable photocell sensitivity
- ▶ Fault monitoring based on power consumption of each output
- ▶ Maximum continuous current 6A per output
- ▶ Potential-free relay alarm (dry contact), (must be equal to lamp voltage)
- ▶ Power consumption <1 W
- ▶ Operating temperature range -40 °C ...+55 °C



CSW Fault Monitoring Unit

Obelux CSW unit is used for controlling and monitoring Obelux DC operated aviation obstruction lights. CSW has 4 independent outputs for monitoring lights at each output. Output fault monitoring is based on power consumption. Alarm window can be selected with dial switches independently for all outputs. This unit can control the flash sequence and day/night mode for the lights. GPS flash synchronization and GSM monitoring are available as options.

Specifications met

ICAO International Standards and Recommended Practices:
Aerodromes Annex 14 Volume 1,
6th Edition, July 2013, Chapter 6

FAA Advisory Circular
AC 150/5345-43G

Several other national standards

Key Features

- ▶ 4 independent outputs with power monitoring at each output
- ▶ Integrated photocell, external photocell option (PCE-DCW-F) for day/night mode change
- ▶ Several flashing modes
- ▶ GPS flash synchronization as an option
- ▶ GSM fault monitoring system as an option (SMS alarms)
- ▶ Alarm output (dry contact)
- ▶ Long maintenance-free lifetime
- ▶ Main/spare switch-over

DATASHEET

CSW Fault Monitoring Unit

For Obelux DC Operated LED Aviation Obstruction Lights

OBELUX
AVIATION LIGHTS

Obelux Oy, Kutomotie 6 B, 00380 Helsinki FINLAND | The information in this document is subject to change without notice. © Obelux Oy 2016

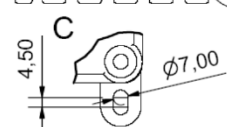
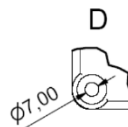
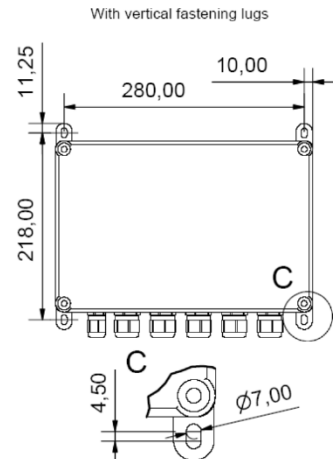
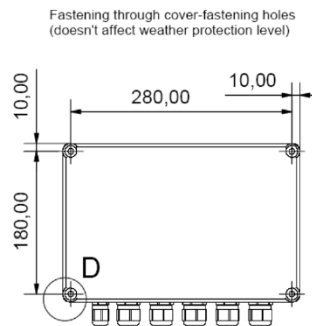
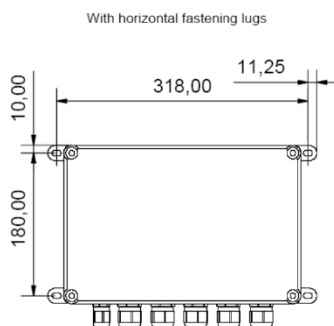
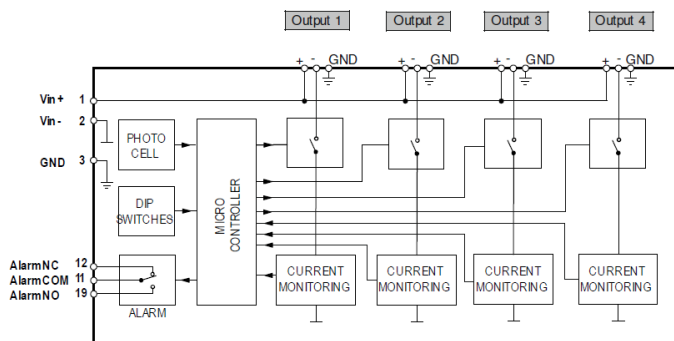
WWW.OBELUX.COM

Flash modes

- ▶ All outputs simultaneously
- ▶ User selectable flashing rate
Steady burning / 20fpm / 30fpm / 40fpm / 60fpm
- ▶ User selectable flash duration
100ms / 250ms / 500ms
- ▶ ICAO/FAA sequential flash
- ▶ Several other national flash sequences

Alarm relay characteristics

- ▶ Two pole contacts: Normally Open (NO) and Normally Closed (NC)
- ▶ Active when unit is powered
- ▶ Switch voltage (max): 110 VDC or 125 VAC
- ▶ Switch current (max): 1 A
- ▶ Switch power (max): 30 W
- ▶ Contact resistance 0.1 ohm



Order code	GPS synch.	GSM monitoring	GPS antenna cable	Operating voltage	Power consumption	Packing dimensions
CSW-DCW-B-F	No	No	NA	10-60VDC	<1W	330x320x150mm, 2,4kg
CSW-DCW-B-G	Yes	No	NA	10-60VDC	<1W	330x320x150mm, 2,5kg
CSW-DCW-B-G3	Yes	No	3m	10-60VDC	<1W	330x320x150mm, 2,5kg
CSW-DCW-B-G5	Yes	No	5m	10-60VDC	<1W	330x320x150mm, 2,5kg
CSW-DCW-B-G10	Yes	No	10m	10-60VDC	<1W	330x320x150mm, 2,5kg
CSW-DCW-B-GSM	No	Yes	NA	10-60VDC	<1W	330x320x150mm, 2,5kg
CSW-DCW-B-G-GSM	Yes	Yes	NA	10-60VDC	<1W	330x320x150mm, 2,6kg