

DATASHEET

MEDIUM-INTENSITY Type B/C

ICAO MI Type B/C 2 000cd
FAA L-864, L-885

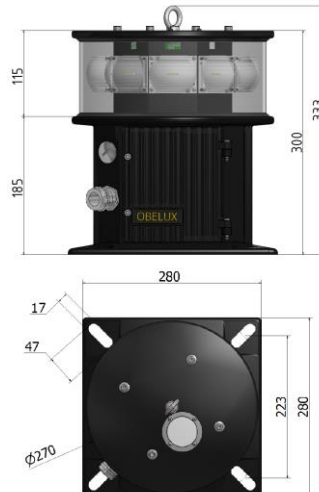
OBELUX
AVIATION LIGHTS

Obelux Oy, Kutomotie 6 B, 00380 Helsinki FINLAND | The information in this document is subject to change without notice. © Obelux Oy 2018

WWW.OBELUX.COM

Optical characteristics

- ▶ 2 000cd (effective)
- ▶ Colour aviation RED
- ▶ NVG compliant infrared (850nm) as an option
- ▶ Horizontal beam 360°
- ▶ Vertical beam 3°
- ▶ Maximum intensity at -1° is less than 1 125cd
- ▶ Maximum intensity at -10° is less than 75cd



Specifications met

ICAO International Standards and Recommended Practices:
Aerodromes Annex 14 Volume 1,
7th Edition, July 2016, Chapter 6:
Medium-intensity Type B/C. Fulfills
the Recommendations Section in
Table 6-3.

FAA Advisory Circular
AC 150/5345-43G:
FAA L-864, L-885

nach Nr. 28 der Allgemeinen
Verwaltungsvorschrift zur
Kennzeichnung von
Luffahrtshindernissen (AVV
Kennzeichnung), Germany

Feux de balisage d'obstacle, DGAC,
STAC, France

Transport Canada, CAR 621,
CL-864, CL-885

Agencia Estatal de Seguridad Aérea
(AESAs), Mexico.

Medium-Intensity Red 2 000cd LED Aviation Obstruction Lights

Obelux medium-intensity stand-alone 2 000cd Red model is used for marking tall structures, such as wind turbines, transmission masts, chimneys, broadcast masts, etc. The product offers unique features such as incorporated fault monitoring, photocell, GPS synchronization, and it supports both stand-alone and Modbus operation as a part of Obelux aviation light system network.

Key Features

- ▶ Based on LED technology
- ▶ 2 000 cd (effective) RED fixed or flashing
- ▶ Supports both stand-alone and Modbus operations
- ▶ Suitable for Offshore environment
- ▶ Incorporated GPS synchronisation
- ▶ Adjustable luminous output levels 10%, 30%, and 100%
- ▶ Incorporated photocell and fault monitoring
- ▶ Hot start feature for radar controlled systems
- ▶ Design lifetime more than 20 years
- ▶ 5-year warranty- the longest in the industry

DATASHEET

MEDIUM-INTENSITY Type B/C

ICAO MI Type B/C 2 000cd
FAA L-864, L-885

OBELUX
AVIATION LIGHTS

Obelux Oy, Kutomotie 6 B, 00380 Helsinki FINLAND | The information in this document is subject to change without notice. © Obelux Oy 2018

WWW.OBELUX.COM

Electrical Characteristics

- ▶ Operating voltage (ACW): 90-265V_{AC}, 50Hz / 60Hz ± 6%
- ▶ Operating voltage (DC): 20-60V_{DC}
- ▶ Flash rates: 20/30/40/60 fpm
- ▶ Meets standards
 - EMC (Emissions): EN 61000-6-4
 - EMC (Immunity): EN 61000-6-2
- ▶ Power consumption for ACW versions
 - 17W @ Night (RED, 40 fpm)
 - 20W @ Night (RED+IR, 40 fpm)
 - 25W @ Night (RED, fixed)
 - 30W @ Night (RED+IR, fixed)

(Flash pulse length for the RED light is 50% of the selected flash rate.)

- ▶ Power consumption for power-save use (ACW versions)
 - 8W @ Night (RED, 40fpm)
 - 11W @ Night (RED+IR, 40fpm)

(Flash pulse length for the RED light is approx. 200ms)

- ▶ Recommended cables (Outdoor) for ACW versions:
 - Power (L-N-PE): 3x1,5mm² or 3x2,5mm²
 - Data: CAT 6
 - Alarm: CAT 6, 3x1,5mm² or 3x2,5mm²
 - Power + Alarm: 6x1,5mm² or 6x2,5mm²

- ▶ Terminals can be used to distribute power and data to another light head (6 core cable must be used).

Mechanical Characteristics

- ▶ Painted marine grade aluminium body (C5MHigh)
- ▶ Glass cover
- ▶ Degree of protection IP66
- ▶ Operating temperature range -40...+55 °C
- ▶ Mounting 240x240mm, φ17mm
- ▶ Height 333 mm, diameter 270 mm
- ▶ Weight 11 kg

Additional Factory-Installed Options

- ▶ Cold-climate version (CCV)
- ▶ NVG compliant infrared (IR)

Order code	Output	ICAO	Op. volt.	GPS synch	Infrared	CC V	Photocell and Fault monitoring	Packing dimensions (mm)
MI-ACWGAM	2 000cd	Type B/C	90-265VAC	Yes	No	No	Yes	460x330x330, 12,7kg
MI-ACWIRGAM	2 000cd	Type B/C	90-265VAC	Yes	Yes	No	Yes	460x330x330, 12,7kg
MI-ACWCCVGAM	2 000cd	Type B/C	90-265VAC	Yes	No	Yes	Yes	460x330x330, 12,7kg
MI-ACWCCVIRGAM	2 000cd	Type B/C	90-265VAC	Yes	Yes	Yes	Yes	460x330x330, 12,7kg
MI-DCGAM	2 000cd	Type B/C	20-60VDC	Yes	No	No	Yes	460x330x330, 12,7kg
MI-DCIRGAM	2 000cd	Type B/C	20-60VDC	Yes	Yes	No	Yes	460x330x330, 12,7kg
MI-DCCCVGAM	2 000cd	Type B/C	20-60VDC	Yes	No	Yes	Yes	460x330x330, 12,7kg
MI-DCCCVIRGAM	2 000cd	Type B/C	20-60VDC	Yes	Yes	Yes	Yes	460x330x330, 12,7kg

DATASHEET

MEDIUM-INTENSITY Type B/C

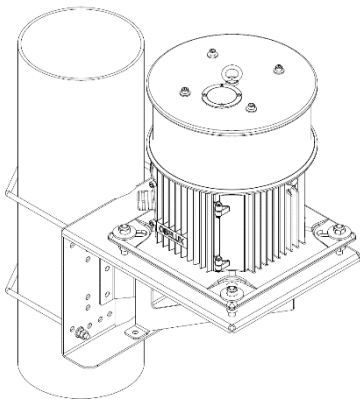
ICAO MI Type B/C 2 000cd
FAA L-864, L-885

OBELUX
AVIATION LIGHTS

Obelux Oy, Kutomotie 6 B, 00380 Helsinki FINLAND | The information in this document is subject to change without notice. © Obelux Oy 2018

WWW.OBELUX.COM

Available mounting sets as an option



Obelux MS-MIV1001

Mounting set for wall mounting and for 60-200mm tubes.

This mounting set includes:

- ▶ 2 pcs U-bolt 60-100
- ▶ 2 pcs U-bolt 100-200
- ▶ 8 pcs M8 hex nut ISO 4161
- ▶ 8 pcs M8 hex nut ISO 4032
- ▶ 8 pcs M10 hex nut ISO 4032
- ▶ 4 pcs M10 hex nut ISO 4161
- ▶ 4 pcs washer DIN 9021 - 13

All parts are AISI316 acid-proof stainless steel.

More detailed mechanical data: see MS-MIV1001 datasheet

▶ **Order Code MS- MIV1001**